



Seeks to provide current income and long-term growth of capital, using both active and passive ETFs

Model description

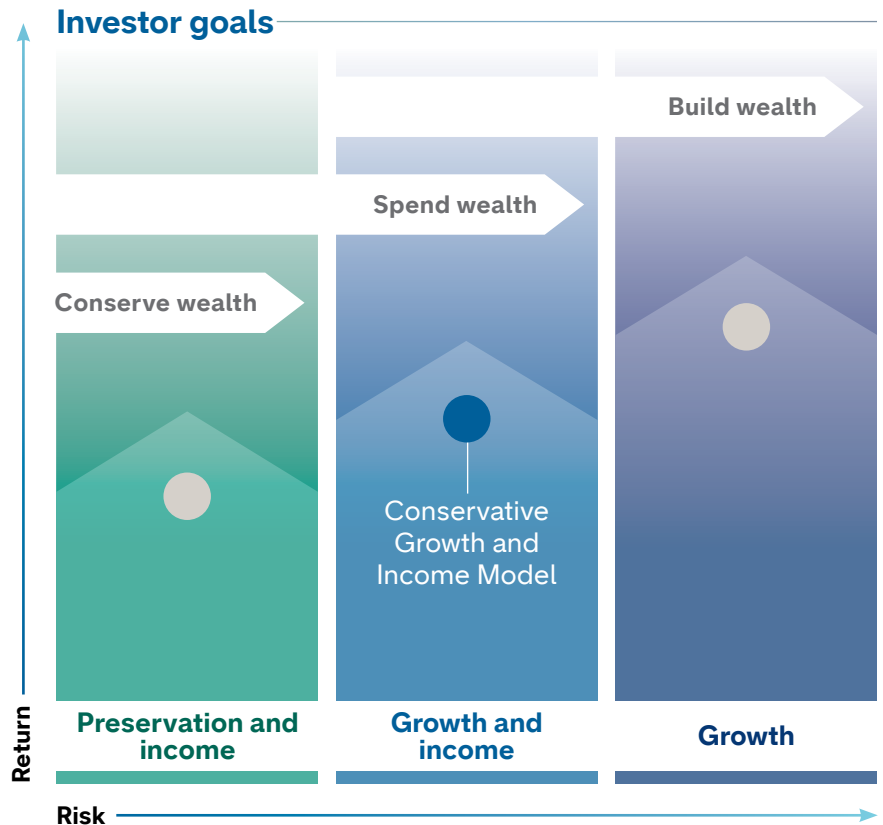
Seeks primarily to provide high current income and, secondarily, long-term growth of capital through dividend-paying equities and fixed income securities, using active American Funds® mutual funds, active Capital Group exchange-traded funds (ETFs) and passive ETFs.

Created by Capital Group

In creating the Capital Group Active-Passive Conservative Growth and Income Model, the Portfolio Solutions Committee (PSC) relied on their in-depth understanding of the underlying funds. Our models are constructed and monitored by the PSC, seasoned investment professionals with support from the Capital Solutions Group, while the underlying funds are managed by their respective portfolio managers. The Portfolio Solutions Committee has an average of over 30 years of investment industry experience.*

For investors who ...

- Seek a broadly diversified portfolio, with a focus on income, to help them pursue their long-term investment goals.
- Seek higher current income and some growth of capital but with lower volatility.
- Want an actively managed core investment for their investment plans.
- Seek the tax advantages of the ETF vehicle and greater transparency of the underlying holdings.
- Value diversified active strategies managed by experienced portfolio managers, complemented by passive investment strategies, to help them accomplish their goals.



Footnote/Important information:

*As of December 31, 2025.

Advisory services offered through Capital Research Management Company (CRMC) and its RIA affiliates.

Model portfolios are provided to financial intermediaries who may or may not recommend them to clients. The portfolios consist of an allocation of funds for investors to consider and are not intended to be investment recommendations. The portfolios are asset allocations designed for individuals with different time horizons, investment objectives and risk profiles. Allocations may change and may not achieve investment objectives. If a cash allocation is not reflected in a model, the intermediary may choose to add one. Capital Group does not have investment discretion or authority over investment allocations in client accounts. Rebalancing approaches may differ depending on where the account is held. Investors should talk to their financial professional for information on other investment alternatives that may be available. In making investment decisions, investors should consider their other assets, income and investments.

Investments are not FDIC-insured, nor are they deposits of or guaranteed by a bank or any other entity, so they may lose value.

Data as of March 31, 2026

Underlying funds

Weight⁴

Underlying funds	Weight ⁴
CGMS — Capital Group U.S. Multi-Sector Income ETF	20%
CGDG — Capital Group Dividend Growers ETF	19%
CGCB — Capital Group Core Bond ETF	8%
CGCP — Capital Group Core Plus Income ETF	7%
VT — Vanguard Total World Stock Index Fund ETF	7%
CGDV — Capital Group Dividend Value ETF	6%
American High-Income Trust [®]	5%
CGBL — Capital Group Core Balanced ETF	5%
AGG — iShares Core U.S. Aggregate Bond ETF	5%
SCHD — Schwab U.S. Dividend Equity ETF [™]	5%
VYM — Vanguard High Dividend Yield Index Fund ETF	5%
American Funds Emerging Markets Bond Fund [®]	3%
DGRO — iShares Core Dividend Growth ETF	3%
BNDX — Vanguard Total International Bond Index Fund ETF	2%

Top five industry⁵

Weight

Top five industry ⁵	Weight
Semiconductors & semiconductor equipment	10.3%
Banks	8.3%
Oil, gas & consumable fuels	7.5%
Pharmaceuticals	5.6%
Aerospace & defense	4.1%

Top five equity holdings⁵

Weight

Top five equity holdings ⁵	Weight
Broadcom	1.6%
TSMC	1.0%
Philip Morris International	1.0%
Microsoft	0.9%
JPMorgan Chase	0.7%

Fixed income quality breakdown^{3,4}

Weight

Fixed income quality breakdown ^{3,4}	Weight
Investment grade (BBB/Baa and above)	68.3%
Non-Investment grade (BB/Ba and below)	31.8%

Footnotes/Important information:

¹Totals may not reconcile due to rounding and/or cash flows.

²For American Funds and Capital Group ETFs, cash and equivalents includes short-term securities, accrued income and other assets less liabilities. It may also include investments in money market or similar funds managed by the investment adviser or its affiliates that are not offered to the public.

³Bond ratings are based on a model portfolio's underlying funds' holdings and investment policies. Bond ratings, which typically range from AAA/Aaa (highest) to D (lowest), are assigned by credit rating agencies such as Standard & Poor's, Moody's and/or Fitch, as an indication of an issuer's creditworthiness. For most American Funds and Capital Group ETFs, if agency ratings differ, a security will be considered to have received the highest of those ratings; and securities in the Unrated category have not been rated by any of the rating agencies referenced above; however, the investment adviser performs its own credit analysis and assigns comparable ratings that are used for compliance with applicable investment policies. Please see each fund's most recent prospectus for details.

⁴Data based on target allocations of the underlying funds.

⁵Data based on the actual allocations of the underlying funds.

Model portfolios are subject to the risks associated with the underlying funds in the model portfolio. Investors should carefully consider investment objectives, risks, fees and expenses of the funds in the model portfolio, which are contained in the fund prospectuses. Investing outside the United States involves risks, such as currency fluctuations, periods of illiquidity and price volatility. These risks may be heightened in connection with investments in developing countries. Smaller company stocks entail additional risks, and they can fluctuate in price more than larger company stocks. The return of principal for bond bonds and for funds with significant underlying bond holdings is not guaranteed. Fund shares are subject to the same interest rate, inflation and credit risks associated with the underlying bond holdings. Lower rated bonds are subject to greater fluctuations in value and risk of loss of income and principal than higher rated bonds. Investments in mortgage-related securities involve additional risks, such as prepayment risk. The use of derivatives involves a variety of risks, which may be different from, or greater than, the risks associated with investing in traditional securities, such as stocks and bonds. Income from municipal bonds may be subject to state or local income taxes and/or the federal alternative minimum tax. Certain other income, as well as capital gain distributions, may be taxable. A nondiversified fund has the ability to invest a larger percentage of assets in the securities of a smaller number of issuers than a diversified fund. As a result, poor results by a single issuer could adversely affect fund results more than if the fund were invested in a larger number of issuers. See the applicable prospectus for details.

Capital Group exchange-traded funds (ETFs) are actively managed and do not seek to replicate a specific index. ETF shares are bought and sold through an exchange at the then current market price, not net asset value (NAV), and are not individually redeemed from the fund. Shares may trade at a premium or discount to their NAV when traded on an exchange. Brokerage commissions will reduce returns. There can be no guarantee that an active market for ETFs will develop or be maintained, or that the ETF's listing will continue or remain unchanged.

Portfolios are managed, so holdings will change. Holdings are the weighted average of the underlying funds.

All Capital Group trademarks mentioned are owned by The Capital Group Companies, Inc., an affiliated company or fund. All other company and product names mentioned are the property of their respective companies. This content, developed by Capital Group, home of American Funds, should not be used as a primary basis for investment decisions and is not intended to serve as impartial investment or fiduciary advice.

Lit. No. MFGEOS-328-0526P Printed in USA CGD/TM/10743-S114607 © 2026 Capital Group. All rights reserved

Capital Group Active-Passive Conservative Growth and Income Model

Asset mix^{1,5}

Weight

Asset mix ^{1,5}	Weight
Total equities	
U.S. equities	34.9%
Non-U.S. equities	12.6%
Total fixed income	
U.S. fixed income	41.5%
Non-U.S. fixed income	8.9%
Cash and equivalents ²	2.1%

The Portfolio Solutions Committee

This model is actively monitored by the committee — a group of senior investment professionals with varied backgrounds and approaches, and decades of investment industry experience. They regularly review the model's results and holdings to keep it aligned with its objectives.



Michelle Black
31 years



Brittain Ezzes
28 years



Samir Mathur
33 years



Damien McCann
26 years



Wesley Phoa
33 years



John Queen
36 years



Andrew Suzman
32 years

Investment industry experience as of December 31, 2025.